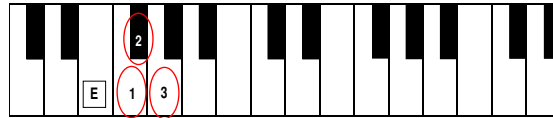
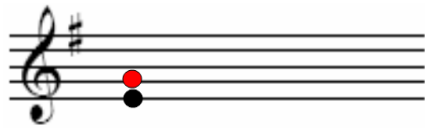


MINOR SCALES & KEY SIGNATURES

Minor Key Signatures

To find out the key signature of a minor scale count up 3 semitones from the starting note. For example if we were to find out the key of E minor it would be G Major.



The key signature for G Major (Ref to Major Key Signatures Sheet) is F Sharp as above.

There are two different minor scales; Harmonic Minor and Melodic Minor.

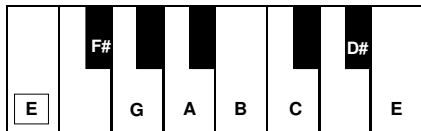
Harmonic Minor Scale

A harmonic minor scale uses all the same notes as its relative major apart from:

- The minor scale starts 3 semitones below the relative major scale
- The seventh note (the note before the root note) is “sharpened”

For example In E Harmonic Minor the seventh note D would be sharpened.

E Harmonic Minor Scale



Melodic Minor Scale

A melodic minor scale uses all the same notes as its relative major apart from:

- The minor scale starts 3 semitones below the relative major scale
- The sixth and seventh note are “sharpened” on the way up but reverts back to the relevant major on the way down.

For example In E Melodic Minor the sixth note C and the seventh note D would be sharpened.

E Harmonic Minor Scale

